

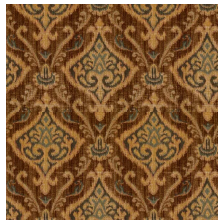
# LF050330BD

# CRAFTMASTER FURNITURE

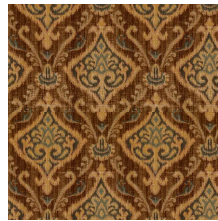
SETTEE SETTEE TRADITIONAL LEATHER



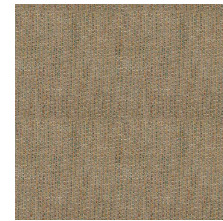
**WENDOVER-16**  
In-Arm, In-Back  
and Front Rail



**SHEEBA-08**  
Outside Back,  
Outside Arm



**SHEEBA-08**  
A Pillows



**ZAYDEN-16**  
Seat Cushion

## Description

Embrace timeless charm with this beautiful English Arm Settee. Covered in both leather and fabric, it has a unique blended look that can be fully customized with any fabric and leather in our line. (see the Custom Blends order form for details about how to order this). A plush bench seat and refined nail head trim create a classic silhouette. Tapered legs and Blend Down seating complete the look with effortless elegance. Tight Back. One pair of LuxDown toss pillows are standard. Also available without nail head trim.

**WIDTH** 55"

**DEPTH** 37"

**HEIGHT** 37"

**BACK TYPE** Blend Down

**SEAT HEIGHT** 20"

**SEAT DEPTH** 22"

**ARM HEIGHT** 27"

**PILLOWS** A 2 (19"x19")

[www.cmfurniture.com](http://www.cmfurniture.com)